



# Grass Value

## Aims and outcomes



The initiative aims to demonstrate the advantages of good grassland utilisation and the benefits that can be achieved from appropriate grassland recording. The power of discussion groups is being employed as a means of disseminating this information and the results will eventually be shared with the wider farming community.

## Current situation on Welsh dairy farms

There are good grass-growing conditions in Wales but the milk price is low. Many systems make little use of grazed grass and rely on conserved or purchased feed, even though it is three times more expensive. As a result of this approach, the typical milk yield per cow

from forage is less than 2,500 litres while farmers on grass-based system are achieving over 4,000 litres, or 1,200kg of milk solids.

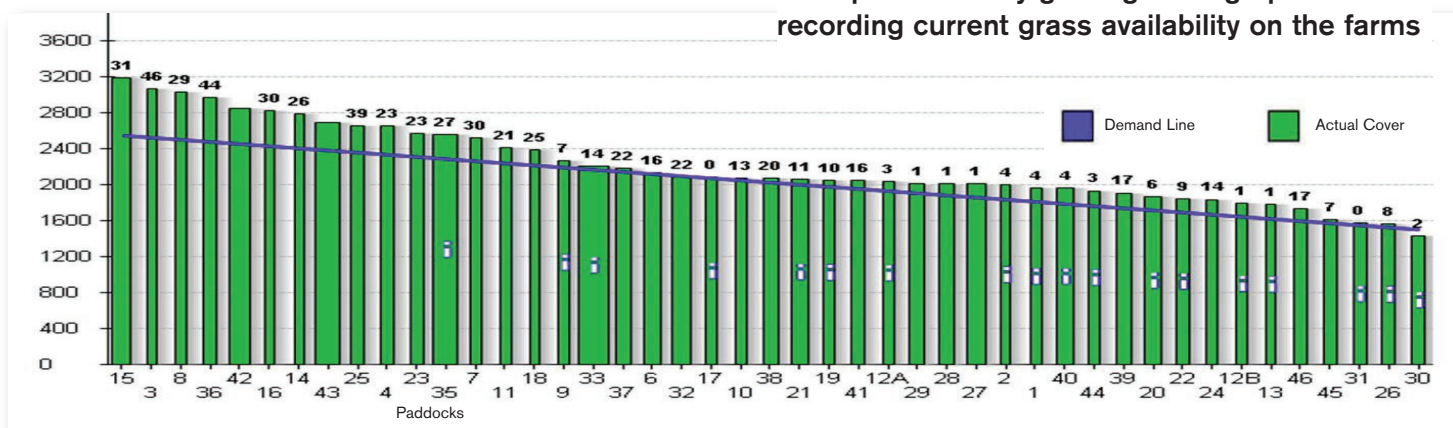
## Farm selection criteria

It was essential that the farms involved in this programme were committed to producing milk from grass. The farmers are all members of discussion groups and they aspire to improve their grassland management. They are all open with their current and future performance figures. The farms are spread across Wales to encompass different climatic and growing conditions and their management systems are varied.

## What the initiative involves

The data being compiled is comprehensive and wide-ranging. Historical information has been collated and an analysis taken of the soil and swards on each farm. Grass growth, rainfall and soil temperature are recorded weekly and there is an on-line facility for inputting grass growth. The monthly performance of individual herds, together with any herd health issues, are monitored and cow condition and locomotion are recorded also. DairyCo's Milkbench+ is utilised for the recording of financial data.

Cover **Surplus: 28475** Target Pre-Graze Cover: 2547



Example of weekly grass growth graph recording current grass availability on the farms



# Gwerth Porfa

## Nod a chanlyniadau



Nod y fenter yw dangos manteision gwneud defnydd da o laswelltir a'r buddiannau sy'n gysylltiedig â chadw cofnodion glaswelltir priodol. Defnyddir grwpiau trafod fel cyfrwng i ledaenu gwybodaeth o'r fath a rhennir y canlyniadau gyda'r gymuned ffermio ehangach yn y pen draw.

## Y sefyllfa bresennol ar ffermydd laeth yng Nghymru

Mae'r amodau ar gyfer tyfu porfa yng Nghymru'n dda ond mae prisiau laeth yn isel. Mae nifer o systemau'n gwneud defnydd prin iawn o borfa ac yn dibynnu ar borthiant a gynilwyd neu a brynwyd, er ei fod deirgwaith yn ddrutach. O ganlyniad, mae buchod sydd ar borthiant

yn cynhyrchu llai na 2,500 litr y fuwch fel arfer, tra mae ffermwyr sy'n defnyddio system bori'n llwyddo i gael dros 4,000 litr, neu 1,200kg o gynnyrch laeth solet.

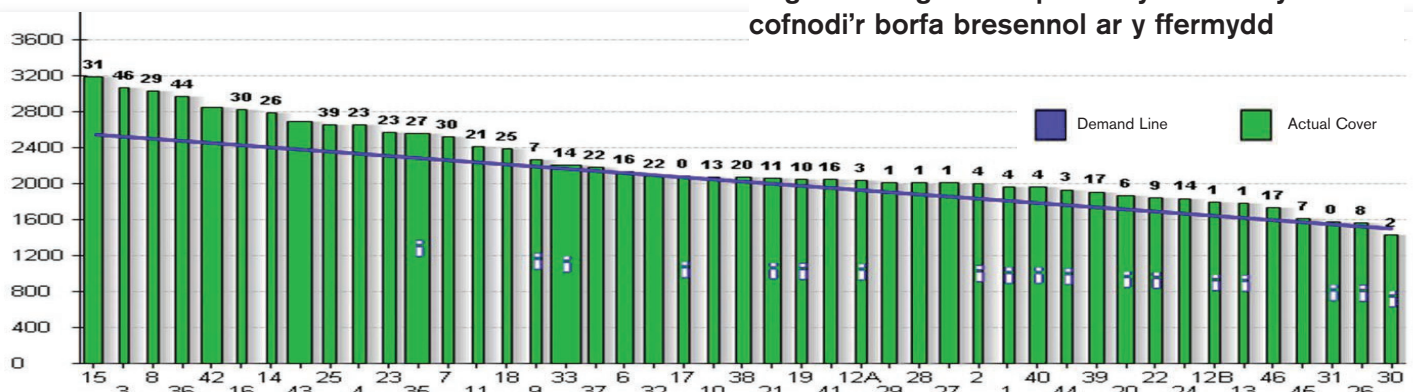
## Meini prawf dewis ffermydd

Roedd hi'n hanfodol bod y ffermydd oedd yn cymryd rhan yn y rhaglen hon wedi ymrwymo i gynhyrchu laeth o borfa. Mae pob un ohonyn nhw'n aelodau o grwpiau trafod ac am wella'u dulliau o reoli glaswelltir. Maent yn gwbl agored am eu ffigyrau perfformio presennol ac yn y dyfodol. Mae'r ffermydd wedi'u lleoli ym mhob cwr o Gymru er mwyn ymgorffori gwahanol fathau o hinsawdd ac amodau tyfu, ac maent yn amrywio o ran eu systemau rheoli.

## Be' sy'n digwydd gyda'r fenter

Mae'r data a gesglir yn gynhwysfawr ac eang. Casglwyd gwybodaeth hanesyddol a gwnaed dadansoddiad o'r pridd a'r tywarch ar bob fferm. Cofnodir twf y borfa, y glawiad a thymheredd y pridd yn wythnosol ac mae 'na gyfleuster ar-lein ar gyfer mewnbynnu twf y borfa. Mae perfformiad misol buchessi unigol, ynghyd ag unrhyw broblemau o ran iechyd y fuches, yn cael eu monitro, a chofnodir cyflwr a symudoledd y fuwch yn ogystal. Defnyddir Milkbench<sup>+</sup> DairyCo i gofnodi'r data ariannol.

Cover Surplus: 28475 Target Pre-Graze Cover: 2547



## Enghraifft o graff twf porfa wythnosol sy'n cofnodi'r borfa bresennol ar y ffermydd